

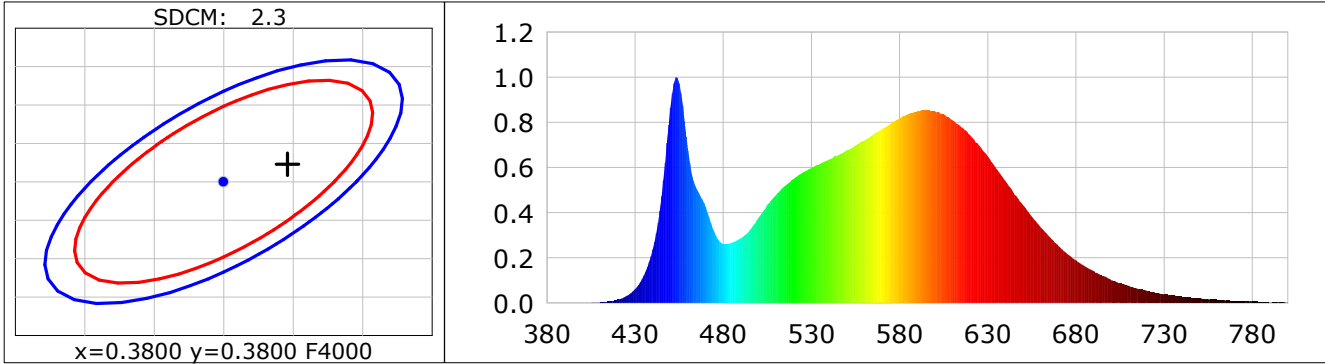
## Lightsource Test Report

**Product Infomation**

Product Category: LED STRIP	Product Type: LED STRIP
Product Spec: HUNA 5	Product Number: 456
Manufacturer: TECSOLED S.L.	Buyer: TECSOLED S.L.

**CIE Colorimetric Parameters**

Chromaticity coordinates:  $x=0.3846$   $y=0.3823$   $u(u')=0.2256$   $v=0.3364$   $v'=0.5046$   
 CCT:  $T_c=3930K$  ( $duv=0.00138$ ) Color Ratio:  $R=0.185$   $G=0.778$   $B=0.037$   
 Peak Wavelength: 453.4nm Half Bandwidth: 19.9nm  
 Dominant Wavelength: 578.6nm Color Purity: 0.302  
 CRI:  $R_a=82.9$ ,  $avgR(1\sim14)=76.1$ ,  $avgR(1\sim15)=76.0$  TM30:  $R_f=83$ ,  $R_g=94$   
 GAI:  $GAI\_BB\_8=89.4$ ,  $GAI\_BB\_15=97.6$ ,  $GAI\_EES=69.5$   
 R1 =81 R2 =90 R3 =96 R4 =80 R5 =81 R6 =86 R7 =85 R8 =63  
 R9 =7 R10=76 R11=79 R12=59 R13=84 R14=98 R15=75  
 Color Quality Scale:  $Q_a=82.5$ ,  $Q_f=82.8$ ,  $Q_p=81.5$ ,  $Q_g=91.3$   
 Q1 =81 Q2 =97 Q3 =80 Q4 =75 Q5 =80 Q6 =82 Q7 =85 Q8 =89  
 Q9 =98 Q10=90 Q11=86 Q12=85 Q13=84 Q14=73 Q15=76



**Photometric Parameters**

Luminous Flux: 1836.6 lm Efficiency: 130.79 lm/W Radiant Power: 5.497 W  
 Total mains efficacy: 121.12 lm/W Energy Efficiency Class: E (EU 2019/2015)

**Electric Parameters**

Voltage: 24.000V Current: 0.5851A Power: 14.04W  
 Power Factor: 1.0000 Frequency: 0.00Hz

**Test Infomation**

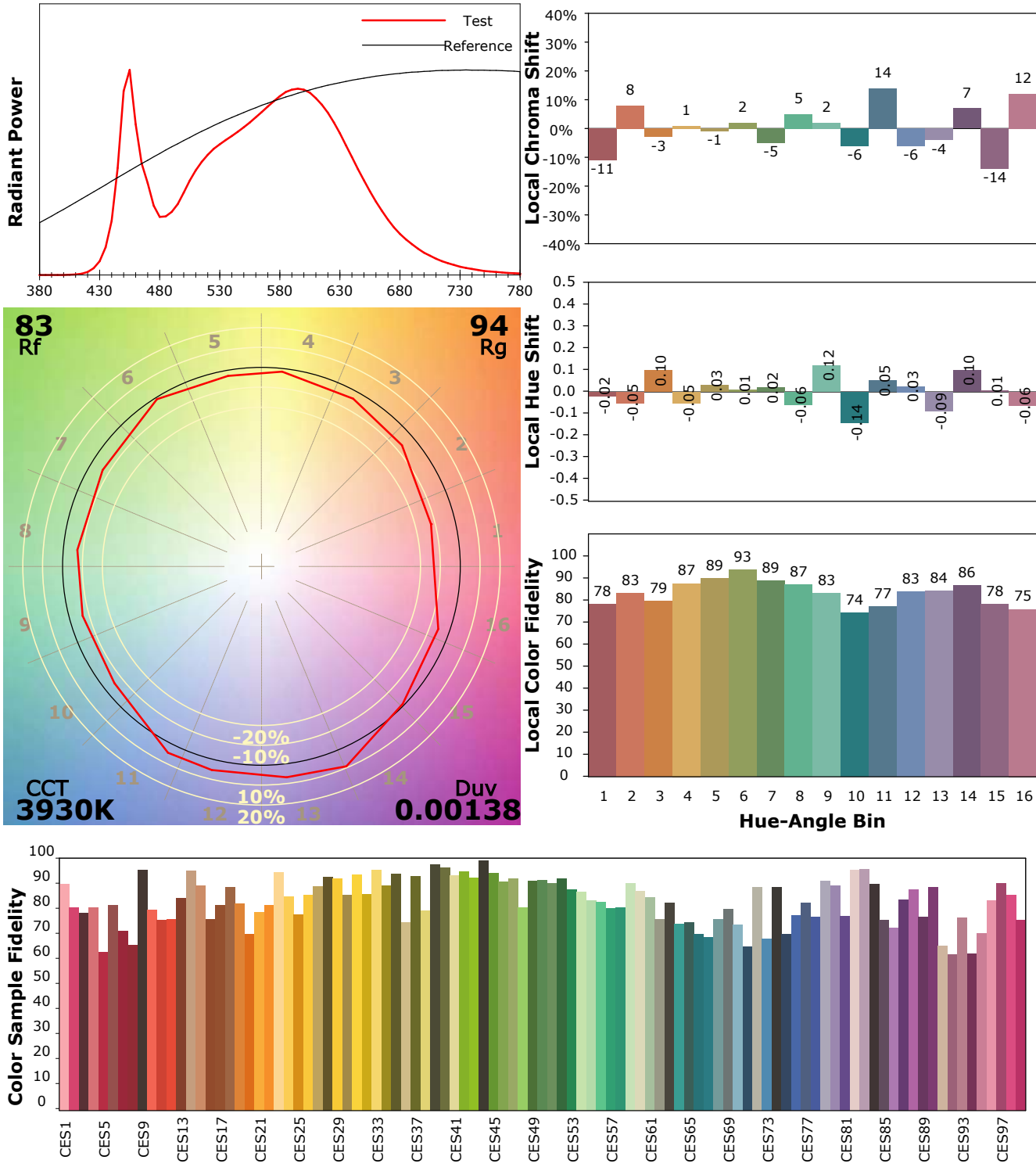
Scan Range: 380~800:1nm	Photometric Method: sphere-spectroradiometer
Stabilization Time: 30 Sec ALC.: 1.0000	Photometric Condition: Sphere diameter: 1.50m, 4PI
Max of Signal: 52138 (2081)	CCD Integration Time: 342.36 ms

## IES TM-30-18 Color Rendition Report

**Product Information**

Product Category: LED STRIP  
 Product Spec: HUNA 5  
 Manufacturer: TECSOLELED S.L.

Product Type: LED STRIP  
 Product Number: 456  
 Buyer: TECSOLELED S.L.



Condition: Tx:18.3'C, Ti:16.6'C, R.H.:60%  
 Test Lab: TECSOLELED S.L.  
 Operator: JORDAN GIL DIAZ

Test Device: Inventfine CMS-2S (Plus)  
 Test Time: 2021-11-10 10:18:51  
 Inspector: